



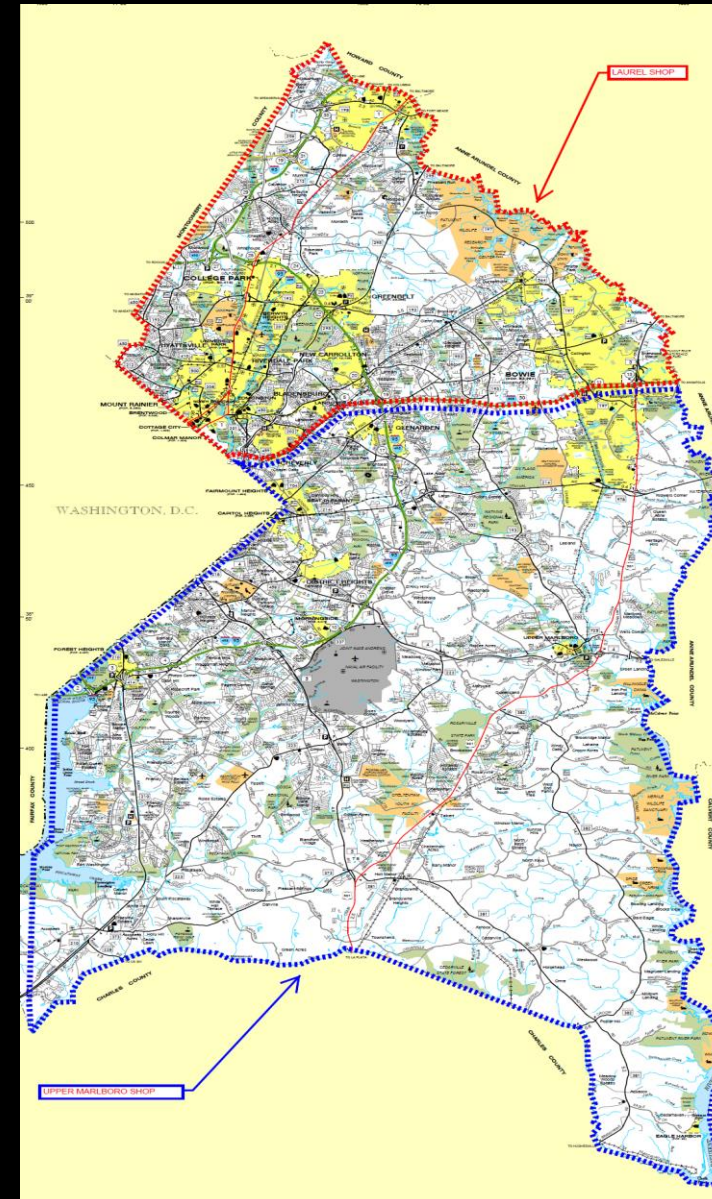
Rushern L. Baker, III
County Executive

Welcome to the Prince George's County 2018 Snow Summit

DISTRICT 3

PRINCE GEORGE'S COUNTY

- **LAUREL MAINTENANCE FACILITY**
 - GREENBELT SALT BARN
 - METRO SALT BARN
 - TUXEDO SALT BARN
- **UPPER MARLBORO MAINTENANCE FACILITY**
 - JONES POINT SALT BARN
 - PRIEST BRIDGE SALT BARN
 - TB SALT BARN



MDOT-SHA PRINCE GEORGE'S COUNTY WINTER RESOURCES & STATISTICS

ANNUAL AVERAGE TRAFFIC VOLUME - 3,216,815,754 = HEAVIEST VOLUME IN MARYLAND

LAUREL MAINTENANCE FACILITY

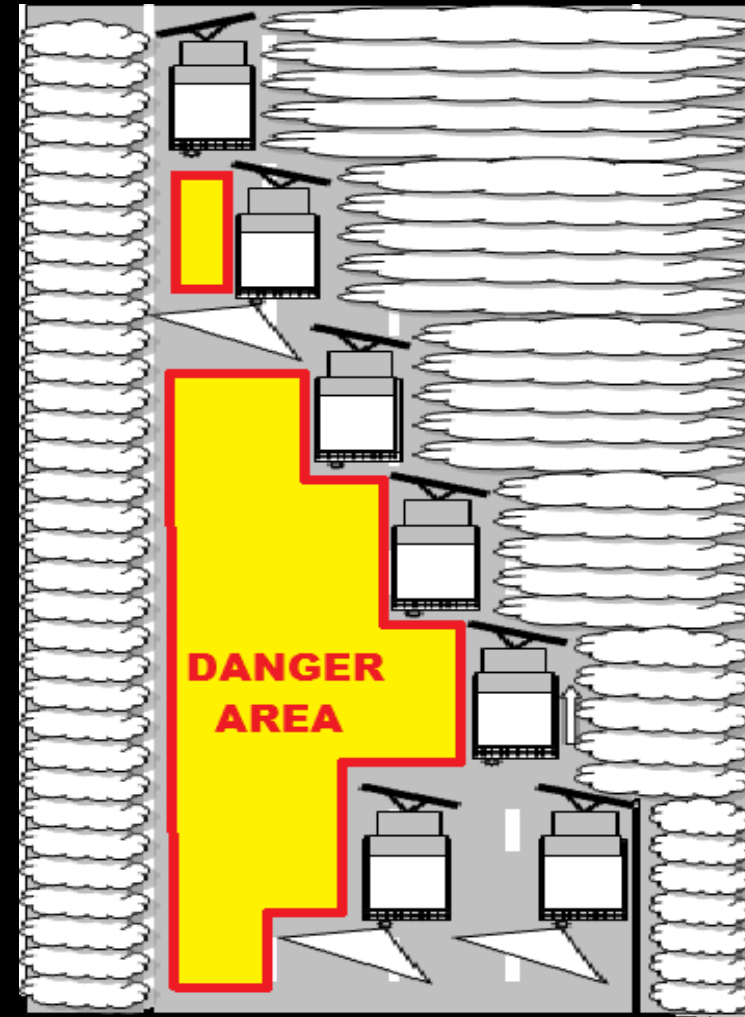
- 817 TOTAL LANE MILES OF ROADWAY
- 21,517 TONS OF SALT IN STORAGE
THROUGHOUT LAUREL'S SALT BARNS
- 40 MDOT-SHA PLOW OPERATORS AND
SUPERVISORS
- 153 CONTRACTOR PLOW OPERATORS

UPPER MARLBORO MAINTENANCE FACILITY

- 980 TOTAL LANE MILES OF ROADWAY
- 19,283 TONS OF SALT IN STORAGE
THROUGHOUT UPPER MARLBORO'S SALT
BARNS
- 40 MDOT-SHA PLOW OPERATORS AND
SUPERVISORS
- 144 CONTRACTOR PLOW OPERATORS

PLOW OPERATIONS

- DO NOT CROWD THE PLOWS
- OPERATORS HAVE LIMITED VISIBILITY
- STAY OUT OF THE DANGER AREAS
- ROADWAY AHEAD OF PLOW TRUCKS WILL BE COVERED IN SNOW
- SAFEST PLACE TO DRIVE DURING A SNOW STORM IS BEHIND PLOW TRUCKS/PLOW TRAINS
- TRUCKS ARE OPERATING AS FAST AS THEY SAFELY CAN

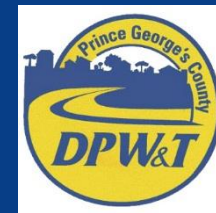


READY FOR SNOW

Prince George's County Department of Public Works and Transportation



Rushern L. Baker, III
County Executive



Gwendolyn T. Clerkley
Acting Director

Who Is Responsible?

Department of Public Works and Transportation

▣ Partners

- Department of the Environment, Landfill
- Department of Permitting, Inspections and Enforcement
- Maryland-National Capital Park and Planning Commission

▣ Contractor Support

How Is Work Accomplished?

- ▣ Maintaining the 1,900+ miles of County roadways
- ▣ Mobilization Planning
 - Levels of Response
- ▣ Incident Command Structure
 - 12-Hour Shifts
- ▣ County Divided into Five Districts
 - District 1 – Glenn Dale
 - Districts 2, 3, and 5 – D'Arcy Road
 - District 4 - Brandywine



How Do We Plow?

- ▣ Primary Roads – plowed during snowfall
 - Treated only if needed during snowfall
- ▣ Collector Roads – plowed during snowfall
 - Treated only if needed during snowfall
- ▣ Residential Roads – plowed after snowfall ends
 - Secondary Roads – plowed first
 - Cul-de-sacs and Dead Ends – plowed last

What's Your Role?

- ▣ Off-street parking
- ▣ **Never** park on a Snow Emergency Route
- ▣ **Wait 24 hours, after the precipitation has stopped falling, to submit snow removal requests to 311**
- ▣ Clear sidewalks in front of your home
- ▣ **Clear driveways and around mailboxes *after* plowing is completed**
- ▣ Stay off roadways if possible
 - If not possible, stay as far behind trucks as possible



PRINCE GEORGE'S COUNTY

DEPARTMENT OF PERMITTING, INSPECTIONS &
ENFORCEMENT



2018-2019 Sidewalk Snow & Ice Removal Inspection Program Summary



November 2018

Program policies

Purpose: To implement the requirements of Section 23-150 of the County Road Ordinance regarding the timely removal of snow and ice from paved sidewalks throughout the County.

Applicability: Owners, tenants and managers of commercial and residential properties which have paved sidewalks that are adjacent to their property, accessible to the public and in close proximity to a public roadway.

Requirement: Responsible parties must remove two inches or more of accumulated snow and ice from abutting sidewalks within forty-eight (48) after snow has fallen or ice accumulated as a result of inclement weather or runoff from abutting surfaces.



Focus areas

- Adjacent to commercial establishments and apartment complexes – the main focus of the program
- Along roadways within 1.5 miles of a school – we have a telephone directory of all County schools
- Along State designated highways
- Along County primary roads
- Abutting major public gathering places – like churches, assembly halls, etc.
- In response to public complaints – 311
- Residential communities - only in response to 311/complaints – place door hanger warnings on all homes along both sides of the block where violation is claimed



Sequence of events

Snow/Ice event triggering criteria: ≥ 2 inches accumulation of snow or ice.

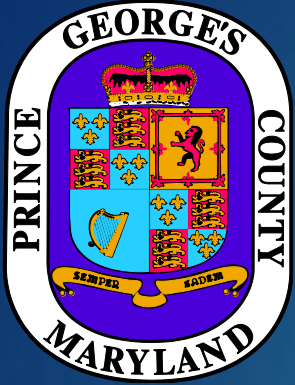
24 Hours after end of a major snow event – DPIE Inspection Teams observe assigned areas, issue door hanger **warnings**, and document results for the day.

48 Hours after end of major snow event – DPIE Inspection Teams revisit assigned areas, issue violation notices/\$100 **citations** where appropriate, and document the results for the day.

Process repeats every day until there is less than 2 inches of snow or ice on sidewalks.

THANK YOU





Rushern L. Baker III
County Executive

Glenda Wilson
Chief of Staff

Musa L. Eubanks, Esq.
Director

Jennifer Hawkins
Division Senior Manager

Office of Community Relations (OCR) 311 Call Center



CALL CENTER



COUNTY CLICK 311



MOBILE APP



CRM SYSTEM

COUNTY AGENCIES



Request a County Service Start Over

- 1 Select Service Type
- 2 Service Location
- 3 Service Information
- 4 Contact Information
- 5 Comments and Attachments
- 6 Review and Submit

i Please provide as much information as possible then click the Next Step button or you may Start Over.
*All fields marked with a * are mandatory*

Service Type: Snow Removal
Service Location: 15506 NEWTONMORE LN, UPPER MARLBORO, MD 20774

Please review additional information below.

Service Information

Has it stopped snowing? No ▼

Please do not submit a request for Snow Removal until AFTER it has stopped snowing. Once it has stopped, it is the County's goal to enter residential areas within 24 hours of when snowfall has stopped.

* What is the specific issue? Roadway needs to be cleared ▼

THIS SERVICE REQUEST TYPE WILL TAKE APPROXIMATELY 10 DAYS TO BE COMPLETED.

Wait 24 hours until after snow-fall ends before submitting a service request

Easy.
Convenient.
Accessible.

Prince George's
CountyClick 311



Rushern L. Baker, III
County Executive



Services Home

Request Service

Status Check

Search

Login

Register

Request a County Service

Start Over

1 Select Service Type

2 Service Location

3 Service Information

4 Contact Information

5 Comments and
Attachments

6 Review and Submit

Please provide as much information as possible then click the Next Step button or you may Start Over.
All fields marked with a * are mandatory

Service Type: Snow Removal (Roadways)

Service Location: 14741 GOVERNOR ODEN BOWIE DR, UPPER MARLBORO, MD 20774

Service Information

* Does this concern snow on sidewalks, streets, or both?

Street

Has it stopped snowing?

Yes

* What is the specific issue?

THIS SERVICE REQUEST TYPE MAY TAKE
APPROXIMATELY 10 DAYS TO BE COMPLETED.

Previous Step

Next Step

- * Blocked Turning Lane
- * Damaged Mailbox
- * Damaged Property
- * Icy/Slippery Roadway
- * Roadway needs clearing
- * Snow/Ice on Sidewalks

Contact Prince George's County



**Dial 3-1-1 or
301-883-4748**



Walk-in:

**County Administrative Building
14741 Governor Oden Bowie Dr.
Upper Marlboro, MD 20772
Lower level, Suite L-3**



Mobile app:

iOS app -

<https://www.apple.com/itunes/>

Google Play app-

<https://play.google.com/store>



E-mail:

countyclick311@co.pg.md.us



Website:

www.countyclick311.com



Write a letter:

**Prince George's County
311 Call Center
14741 Governor Oden Bowie Dr.
Upper Marlboro, MD 20772**



THANK YOU



Kidney Dialysis & Emergency Preparedness

Richard Goddard
Public Health Emergency Preparedness
Program Chief

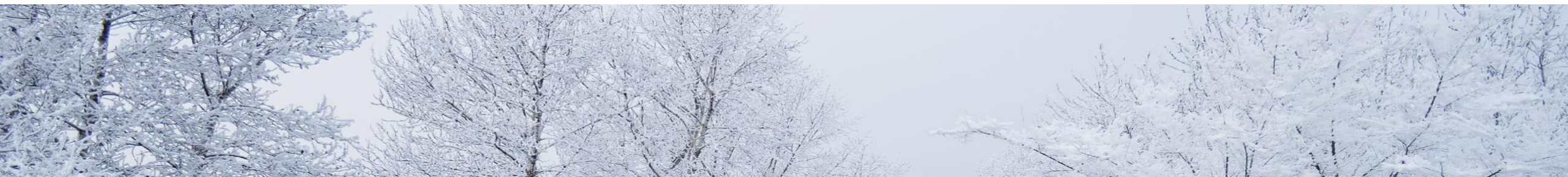
Prince George's County Health Department



Dialysis & Emergencies

Emergencies can happen anywhere at any time, and can have a direct impact on you and your ability to receive dialysis.

Take steps to prepare before an emergency occurs.

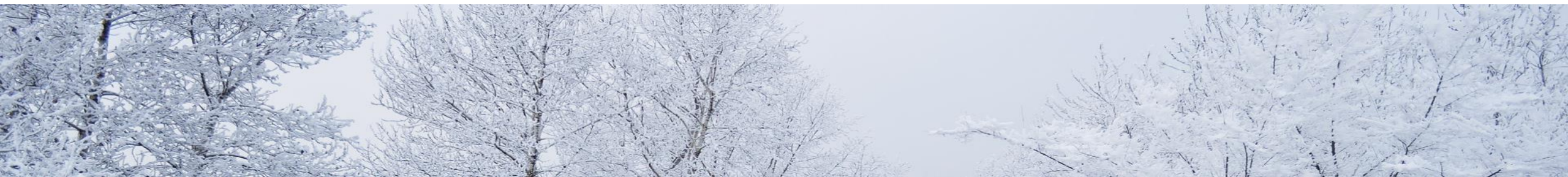



Personal Preparedness



Personal preparedness is important for everyone.

- Create a plan.
- Pack a kit.
- Get involved.





Winter storms can disrupt transportation services and prevent access to dialysis services.

- Contact your provider to arrange treatment prior to a forecasted event.
- Secure assistance from family and neighbors to plow private sidewalks and driveways.



Preparing for Winter Storms



Additional Resources

Emergency Preparedness for Dialysis Patients, <https://www.davita.com/kidney-disease/overview/living-with-ckd/emergency-preparedness-for-people-with-kidney-disease/e/4930>

Centers for Disease Control and Prevention, <https://emergency.cdc.gov/>

Department of Homeland Security's Ready Program, <https://www.ready.gov/>

Prince George's County Snow Summit 2018

Winter is Coming

- Brings more than just snow
- Cold temps mean cold water in Potomac
- Average almost 1,800 Water Main Breaks every year
- Last year was a record breaker!
 - 819 breaks in January alone



If a Water Main Breaks

Report A Problem



wsscwater.com • #WSSC



Stock Up on Water

- In case of prolonged water disruptions
 - Water Main Break Repairs can take about 6 hours
- Extended power outage can create water restrictions

1-2 Gallons safe tap or bottled water per person per day

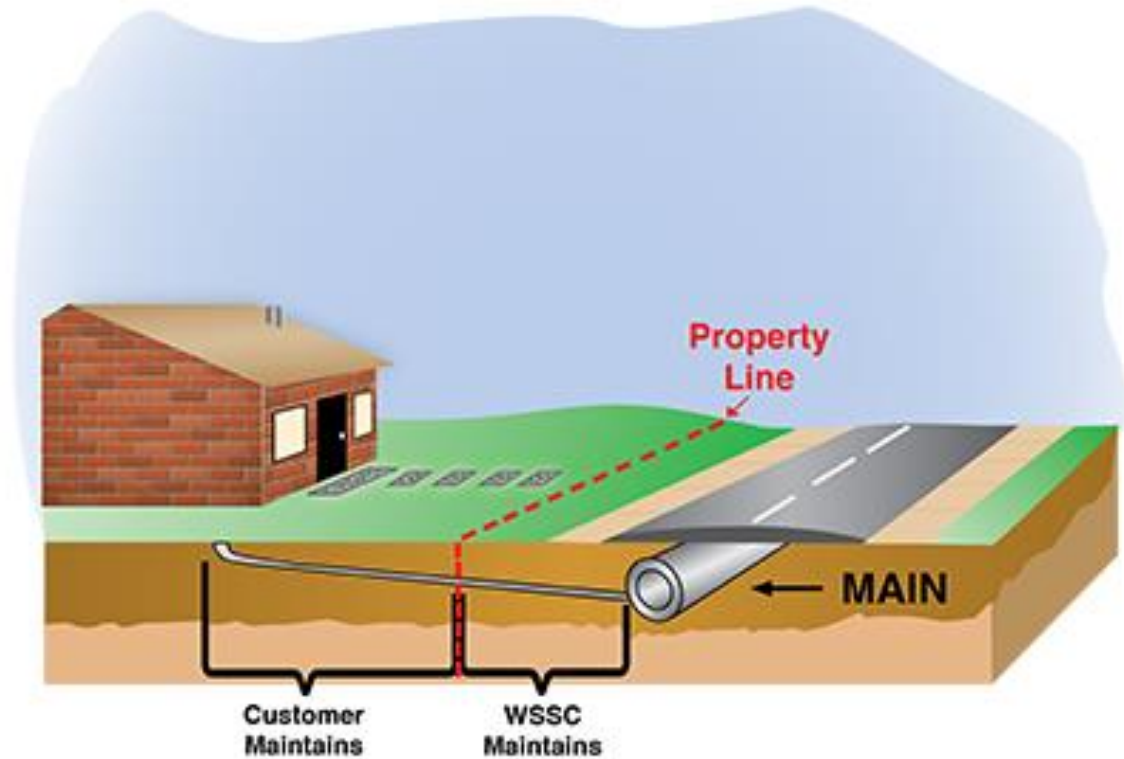
▶ Store enough to last each person at least **3 days**

▶ Don't forget the **pets!**



Did you know YOU are responsible for pipes on your property?

- Many people are unaware
- WSSC is responsible for pipes in the public space



Protect your pipes

- Water Meters & Interior Pipes – Need area with temps at least 50°
- TIPS
 - Repair windows, doors & walls
 - Seal air leaks in crawl spaces & basement
 - Insulate outside walls

wsscwater.com/winterize





Prince George's County Fire/EMS Department





Snow Operations

- **Fire Department starts preparation of vehicles, plows and spreaders in the month of October**
- **All staffing of plow units and salt spreaders is handled through the PGFD staffing program**
- **Actual staffing and deployment starts once a Winter Storm Watch has been declared for Prince George's County**



Deployment Operations (Level 1)

- **Three plows with salt spreaders are placed in service geographically across the county**

Deployment Operations (Level 2)

- **Seven additional plows are placed geographically across the county**

Prince George's County Police Department

Police response during a winter storm emergency.



Protecting and Serving Since 1931

Henry P. Stawinski, III
Chief of Police



Prince George's County Police Department

- Should weather conditions deteriorate making routine patrol hazardous, a Shift Commander, or other Command Officer, may suspend routine patrol operations.
- Officers may be assigned to patrol shopping centers and other business areas. Officers will stay off the roadways to allow the snow removal process to continue without interference.
- Should routine operations be suspended, officers will still respond to emergency calls for service. Calls only requiring a report will be forwarded to the station desk where a report will be taken over the phone.



Protecting and Serving Since 1931

Henry P. Stawinski, III
Chief of Police



Prince George's County Police Department

Be prepared
Stay indoors
Keep off the roads
Lookout for your neighbors



Protecting and Serving Since 1931

Henry P. Stawinski, III
Chief of Police



Prince George's County Police Department

- Social Media
- Facebook
- <https://www.facebook.com/PGPD1/>
- Twitter
- <https://twitter.com/PGPDNews>
- Police Service Telephone Numbers
- Emergency: 911
- Non-emergency: 301-352-1200
- General Information and Service: 311



Protecting and Serving Since 1931

Henry P. Stawinski, III
Chief of Police





**Thank you for attending the
Prince George's County
2018 Snow Summit**