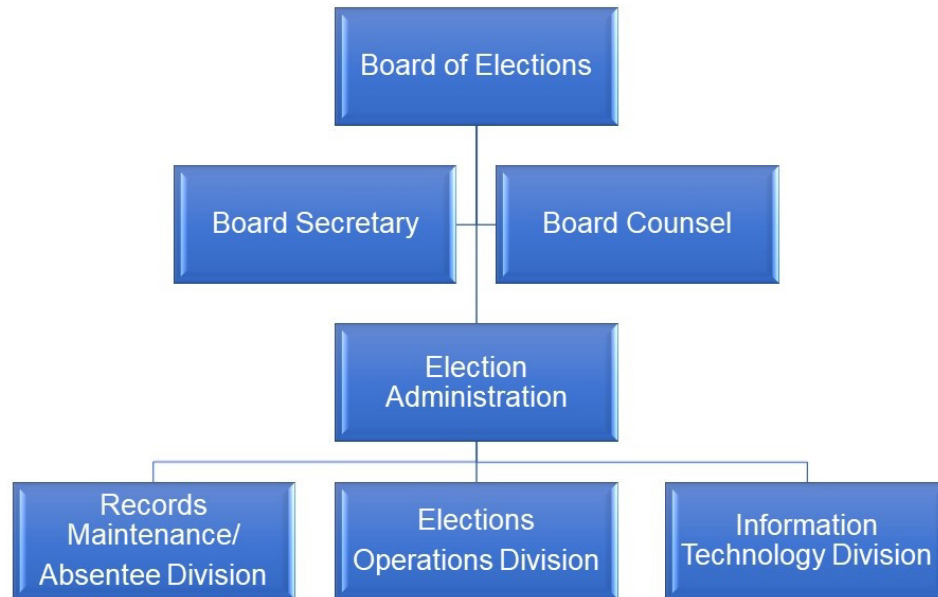


Board of Elections



MISSION AND SERVICES

The Board of Elections provides election services to County citizens in order to ensure registered voters are able to vote in accordance with federal, State and County election laws.

CORE SERVICES

- Poll site identification
- Poll site operational management (during the early voting period and on election days)
- Voter registration, records management and informational updates
- Voting equipment maintenance
- Candidate filing
- Community outreach
- Redistricting
- Petitions

FY 2020 KEY ACCOMPLISHMENTS

- Increased the percentage of Prince George's County residents registered to vote in all election cycles and increased voter awareness by utilizing public service announcements, radio, television and print media to provide information to citizens regarding the election, voter registration, availability of online voter registration, early voting, same day registration and the voting equipment.
- Prepared for and conducted the 2020 presidential primary election.

- Reduced the number of duplicate voters registered in various states utilizing the Electronic Registration Information Center (ERIC).
- Recruited and trained election judges.

STRATEGIC FOCUS AND INITIATIVES FOR FY 2021

The board's top priorities in FY 2021 are:

- Increase the percentage of Prince George's County residents registered to vote in all election cycles and increase voter awareness by utilizing public service announcements, radio, television and print media as a means to provide information to citizens regarding the election, voter registration, availability of online voter registration, early voting, same day registration and the voting equipment.
- Preparation for and conduct of the 2020 presidential election.
- Reduce the number of duplicate voters registered in various states utilizing the Electronic Registration Information Center (ERIC).
- Recruiting and training election judges.
- Plan for the implementation of same day registration on Election Day.
- Revise the ballot dissemination formula used for Election Day.

FY 2021 BUDGET SUMMARY

The FY 2021 proposed budget for the Board of Elections is \$6,690,700, an increase of \$569,200 or 9.3% over the FY 2020 approved budget.

Expenditures by Fund Type

Fund Types	FY 2019 Actual		FY 2020 Budget		FY 2020 Estimate		FY 2021 Proposed	
	Amount	% Total	Amount	% Total	Amount	% Total	Amount	% Total
General Fund	\$5,262,016	100.0%	\$6,121,500	100.0%	\$5,910,900	100.0%	\$6,690,700	100.0%
Total	\$5,262,016	100.0%	\$6,121,500	100.0%	\$5,910,900	100.0%	\$6,690,700	100.0%

Reconciliation from Prior Year

	Expenditures
FY 2020 Approved Budget	\$6,121,500
Increase Cost: Operating - Technology Allocation — Increase in charges based on the new methodology to support anticipated countywide costs	\$329,000
Increase Cost: Compensation - Mandated Salary Requirements — Includes compensation for additional judges, closing judges, recruiters and sheriffs, in addition to an increase in hourly salaries for the general election	117,500
Increase Cost: Operating — Increase in printing expenses due to extra ballots needed for 3-paged ballots for general election	40,000
Increase Cost: Operating — Increase in training for additional Election Judges related to the Same Day Registration Initiative	21,500
Increase Cost: Fringe Benefits — Increase in the fringe benefit rate from 13.4% to 13.5% and compensation adjustments	20,300
Increase Cost: Operating — Increase in telephone expenses due to the general election	17,000

Reconciliation from Prior Year *(continued)*

	Expenditures
Increase Cost: Operating — Increase in membership fees, periodicals, mileage reimbursement, general office supplies and office equipment rental/lease to meet anticipated costs	13,900
Increase Cost: Operating — Increase in general and administrative contracts due to increased printing expenses for sample ballots for the general election	10,000
FY 2021 Proposed Budget	\$6,690,700

STAFF AND BUDGET RESOURCES

Authorized Positions	FY 2019 Budget	FY 2020 Budget	FY 2021 Proposed	Change FY20-FY21
General Fund				
Full Time - Civilian	18	18	18	0
Full Time - Sworn	0	0	0	0
Subtotal - FT	18	18	18	0
Part Time	0	0	0	0
Limited Term	0	0	0	0
TOTAL				
Full Time - Civilian	18	18	18	0
Full Time - Sworn	0	0	0	0
Subtotal - FT	18	18	18	0
Part Time	0	0	0	0
Limited Term	0	0	0	0

Positions By Classification	FY 2021		
	Full Time	Part Time	Limited Term
Administrative Aide	3	0	0
Administrative Assistant	1	0	0
Administrative Specialist	1	0	0
Citizen Service Specialist	2	0	0
Data Coordinator	3	0	0
Election Administrator	1	0	0
Equipment Operator	0	0	0
General Clerk	4	0	0
Supervisory Clerk	1	0	0
Systems Analyst	2	0	0
TOTAL	18	0	0

Expenditures by Category - General Fund

Category	FY 2019 Actual	FY 2020 Budget	FY 2020 Estimate	FY 2021 Proposed	Change FY20-FY21	
					Amount (\$)	Percent (%)
Compensation	\$3,939,172	\$4,480,500	\$4,384,100	\$4,598,000	\$117,500	2.6%
Fringe Benefits	569,371	600,400	530,200	620,700	20,300	3.4%
Operating	753,473	1,040,600	996,600	1,472,000	431,400	41.5%
Capital Outlay	—	—	—	—	—	—
Total	\$5,262,016	\$6,121,500	\$5,910,900	\$6,690,700	\$569,200	9.3%

In FY 2021, compensation expenditures increase 2.6% over the FY 2020 budget due to mandated salary requirements and anticipated changes in the temporary/seasonal staffing complement due to the 2020 general election. Compensation costs include funding for 18 full time employees, 3,500 election judges, 490 chief judges and 1,111 other temporary staff hired for the 2020 presidential election. Fringe benefit expenditures increase 3.4% over the FY 2020 budget to align with compensation adjustments and anticipated costs.

Operating expenditures increase 41.5% over the FY 2020 budget primarily driven by an increase in the technology cost allocation, an increase in printing expenses due to extra ballots needed for three-paged ballots for the general election and an increase in training for additional election judges due to the same day initiative. Additionally, there is an increase in telephone expenses due to the general election and an increase in general and administrative contracts due to printing of sample ballots needed for the general election.

SERVICE DELIVERY PLAN AND PERFORMANCE

Goal 1 — To provide election services to citizens to ensure all eligible citizens have an opportunity to vote in a primary or general election.

Objective 1.1 — Increase the percentage of County residents that are registered to vote.

FY 2025 Target	FY 2018 Actual	FY 2019 Actual	FY 2020 Estimated	FY 2021 Projected	Trend
99%	77%	90%	95%	98%	↔

Trend and Analysis

Same Day Registration (SDR) was implemented during the 2016 Presidential Elections. SDR on Election Day will be implemented during the 2020 Presidential Primary Election. With the invent of online voter registration and the offering of SDR during Early Voting and on Election Day, citizens now have increased opportunity to participate in the election process.

As of October 31, 2019, there are 622,398 registered voters in Prince George's County. Registrations are forecast to continue their strong growth as younger citizens become politically engaged; about 47% of the State's population is between ages 18 and 49, they consititue the single largest voter segment in Maryland.

Performance Measures

Measure Name	FY 2017 Actual	FY 2018 Actual	FY 2019 Actual	FY 2020 Estimated	FY 2021 Projected
Resources (Input)					
Staff dedicated to outreach activities	4	3	5	7	10
Workload, Demand and Production (Output)					
Newspaper advertisements published	2	1	0	1	2
Website visits	43,696	68,556	70,563	75,000	85,000
Outreach events attended	61	30	33	60	75
County population 18 years or older	682,399	683,764	685,139	686,495	689,360
Registered voters	580,123	527,531	618,680	650,000	675,000
Efficiency					
Outreach events attended per staff dedicated to outreach activities	10	10	13	9	8
Impact (Outcome)					
Voters registered to vote in all election cycles	85%	77%	90%	95%	98%

Objective 1.2 — Maintain average wait time for voters on Election Day and during early voting at less than 15 minutes.

FY 2025 Target	FY 2018 Actual	FY 2019 Actual	FY 2020 Estimated	FY 2021 Projected	Trend
15:00	0:00	3:00	3:00	5:00	↔

Trend and Analysis

The County voting system is a four-step process: check-in; ballot issuance; ballot marking and vote casting via a scanner. The CountyStat staff assisted the Board by conducting a wait time survey and evaluating the Boards process. CountyStat submitted a report to the Board and the Board incorporated some of the recommendations during the 2018 Gubernatorial Election cycle. The Board will additionally continue to record and analyze wait times during the 2020 Presidential Election Cycle.

The Board faced a challenge during the 2018 General Election when several polling places ran out of ballots increasing wait times. During its analysis of the ballot shortage, the board found that it can no longer rely on historical voter turnout data to determine ballot allocation. The Board will implement a new methodology of calculating the number of ballots needed in order to ensure a ballot shortage does not occur in the future. Average voter waiting time can vary significantly in different types of elections but is expected to remain below the Presidential Commission's recommendation of 15 minutes.

Performance Measures

Measure Name	FY 2017 Actual	FY 2018 Actual	FY 2019 Actual	FY 2020 Estimated	FY 2021 Projected
Resources (Input)					
Voting units	394	461	537	662	662
Polling places	275	283	285	285	285
Election judges recruited and trained	4,579	6,320	3,801	5,000	5,500
Workload, Demand and Production (Output)					
Voters during Primary election	n/a	527,531	n/a	200,000	n/a
Voters during General election	392,860	n/a	322,036	n/a	350,000
Votes cast during early voting: Primary election	n/a	41,101	n/a	50,000	55,000
Votes cast during early voting: General election	160,140	n/a	103,298	n/a	150,000
Efficiency					
Election judges per polling place	17	22	14	26	28
Impact (Outcome)					
Wait time during the Presidential General election (average)	3:00	n/a	n/a	n/a	5:00

Performance Measures *(continued)*

Measure Name	FY 2017 Actual	FY 2018 Actual	FY 2019 Actual	FY 2020 Estimated	FY 2021 Projected
Wait time during the Gubernatorial Primary (average)	n/a	0:00	n/a	n/a	n/a
Wait time during the Gubernatorial General election (average)	n/a	n/a	3:00	n/a	n/a
Wait time during the Presidential Primary election (average)	n/a	n/a	n/a	3:00	n/a