



*Prince George's County*

# 7<sup>th</sup> GREEN SUMMIT

annual

DEPARTMENT OF THE ENVIRONMENT

2021

WASTE DIVERSION



# WASTE MANAGEMENT FACILITIES

- **Brown Station Road Sanitary Landfill (BSRSL)**
  - Household Hazardous Waste (HHW) Acceptance site
  - Electronics Recycling (ER) Acceptance Site
- **Materials Recycling Facility (MRF)**
- **Organics Composting Facility (OCF)**



# BROWN STATION ROAD SANITARY LANDFILL

The **Brown Station Road Sanitary Landfill (BSRSL)** at 11611 White House Road in Upper Marlboro is open to the public Monday - Saturday between the hours of 8:00 a.m. - 3:30 p.m. Closed Sundays.

The Landfill has several recycling facilities within the complex, which include the **Household Hazardous Waste Acceptance Site (HHW)** and **Electronics Recycling Acceptance Site (ERAS)** which are only open on Thursday, Friday and Saturday, and sites for yard waste, scrap tires and appliances (Monday through Saturday).

The landfill has successfully provided 100% of the electrical power needs and fuel oil needs for the expansive **County Correctional Center (CCC)** in Upper Marlboro.

To learn more about the landfill, visit [bit.ly/PGCsanitarylandfill](https://bit.ly/PGCsanitarylandfill).





# HOUSEHOLD HAZARDOUS WASTE & ELECTRONICS RECYCLING

## HOURS OF OPERATION

- Thursday, Friday, & Saturday
- 8 a.m. – 3:30 p.m.

## LOCATION

Brown Station Road Sanitary Landfill

**11611 White House Road**

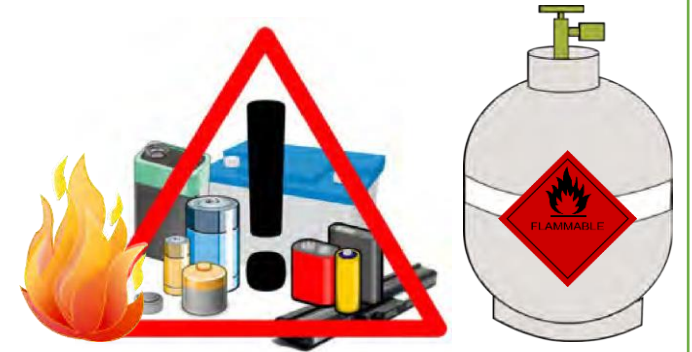
**Upper Marlboro MD 20774**

*Use the White House Road entrance.*

- Materials must be dropped off at facility
- Residential materials only.

For more information, visit [bit.ly/hwaste](https://bit.ly/hwaste)

**\*\*Incorrect disposal of batteries or propane tanks can cause fires or explosions!\*\***



## ACCEPTABLE ITEMS:

Acid Car Batteries

Automotive Fluids and Fuels

Cleaning Agents

Cooking Oil

Driveway Sealers

Fire Extinguishers

Fluorescent Light Bulbs

Gas Grill Propane Tanks

Helium Balloon Tanks

Household Batteries

Insecticides, Herbicides, and Fertilizers

Mercury and Other Hazardous Materials

Oil-Based Paints

Photographic Chemicals

Poisons

Smoke Detectors

Solvents, Varnishes, and Stains

Swimming Pool Chemicals





# TOUR OF THE LANDFILL & ACCEPTANCE SITES



[youtu.be/RwIC53msK6U](https://youtu.be/RwIC53msK6U)



[youtu.be/9CKBsT0WWQo](https://youtu.be/9CKBsT0WWQo)



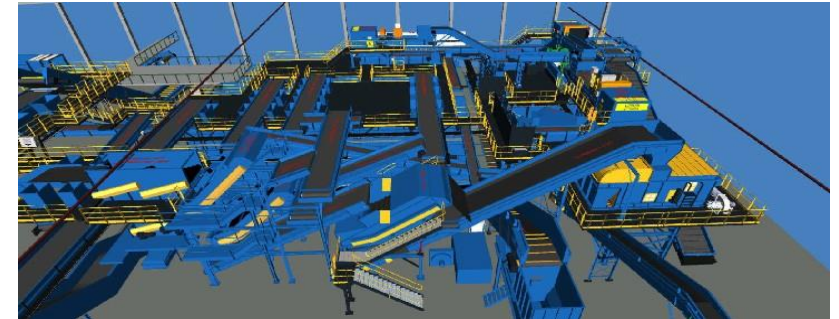
# MATERIALS RECYCLING FACILITY

The **Prince George's County Materials Recycling Facility (MRF)** opened in October of 1993 and is a 65,000 square foot facility. The primary functions of the MRF are to remove contaminants and separate recyclables. Once separated, the glass, aluminum, steel plastic and paper are baled or crushed and shipped to end markets and new products manufacturers.

Prince George's County offers single-stream recycling collection, allowing residents to conveniently place all recyclable materials into one container/bin, making it much more efficient.

- The MRF recently upgraded its plastic sorting equipment with an optical sorter, which will facilitate the production of “cleaner” bales of plastics due to sorting by TYPE (#'s 1, 2, 3, 5, & 7), resulting in an increase in plastic being recycled as well as revenue.

To learn more about the MRF, visit [bit.ly/pgcmrf](https://bit.ly/pgcmrf).





# TOURS OF THE RECYCLING FACILITY



[vimeo.com/403011619/b6641d3791](https://vimeo.com/403011619/b6641d3791)



[youtu.be/ERX7GxRBspM](https://youtu.be/ERX7GxRBspM)



# NEW UPGRADES TO RECYCLING FACILITY IN SEPTEMBER 2021



[youtu.be/uv5OUbTF7SM](https://youtu.be/uv5OUbTF7SM)





# ORGANICS COMPOSTING FACILITY

For more than 26 years, Prince George's County has owned and managed the 200+ acre, Organics Composting Facility (OCF).

Over 50,000 tons of material is processed annually at the OCF. Yard trim is ground up and moved into long narrow piles known as windrows. Yard Trim collections are available to residents who receive county-provided services, picked up every Monday (excluding certain holidays).

The OCF turns yard waste and food scraps into a nutrient-rich compost known as Leafgro® and Leafgro GOLD®. These soil nutrients help promote healthy plants, reduce soil erosion and eliminate the need for chemical-based fertilizers.

In efforts to maintain an aggressive approach to improving recycling and waste diversion rates, Prince George's County expanded the Food Scrap Composting Program to an additional 3,000 households this year.

To learn more about the OCF, visit [bit.ly/pgccomposting](https://bit.ly/pgccomposting).





# TOURS OF THE COMPOSTING FACILITY



[fb.watch/8tiFUqDKSr/](https://fb.watch/8tiFUqDKSr/)



[youtu.be/mXFLEUzW-yE](https://youtu.be/mXFLEUzW-yE)