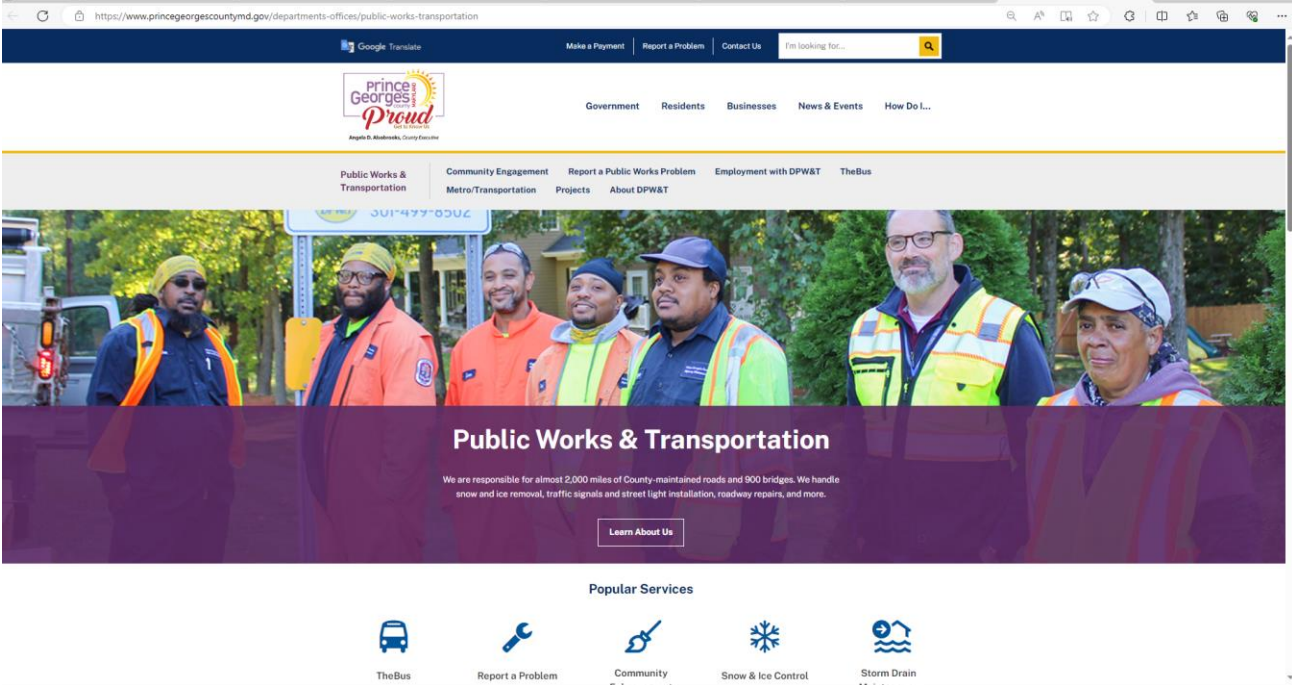


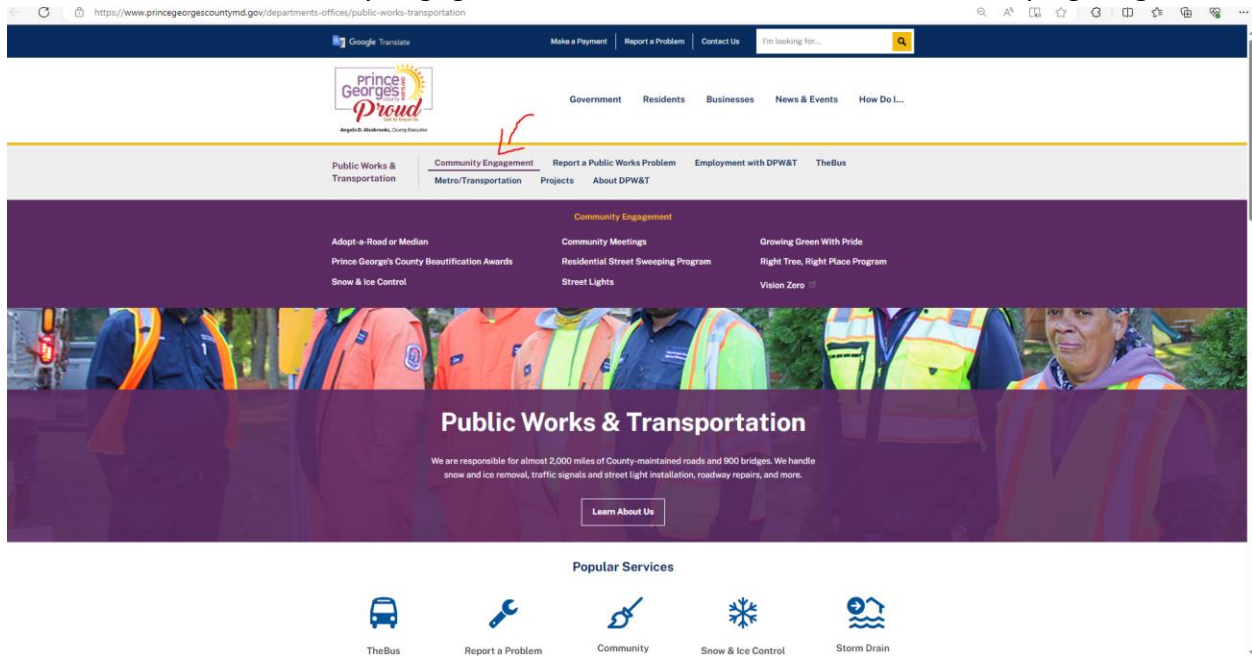
HOW-TO GUIDE: NAVIGATING DPW&T'S STREET SWEEPING OPERATIONS INTERACTIVE MAP

HOW-TO ACCESS INTERACTIVE MAP

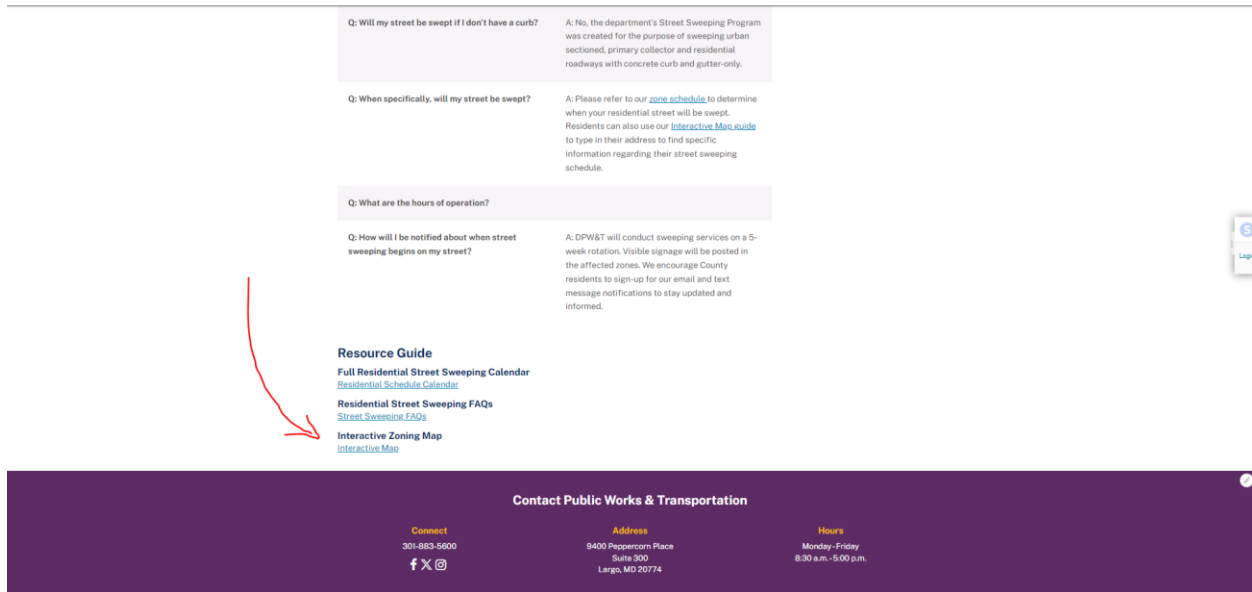
STEP 1: Visit DPW&T's website at <https://dpwt.mypgc.us/>



STEP 2: Click on “Community Engagement” and select “Residential Street Sweeping Program”

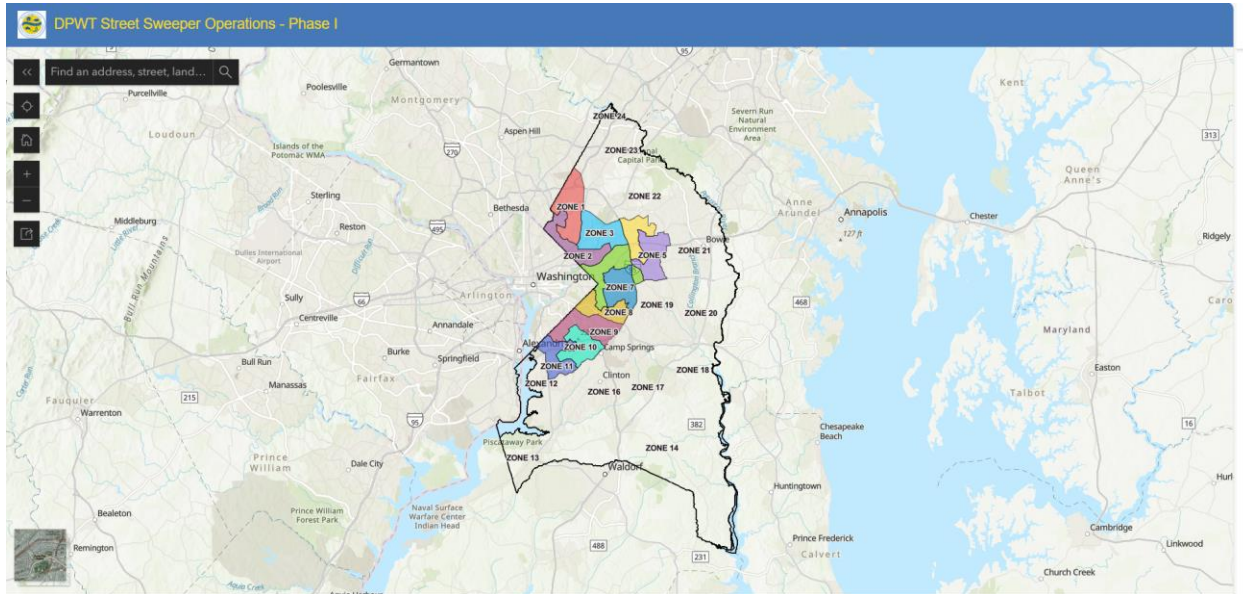


STEP 3: Scroll to the bottom of the page to “Resource Center” and select the link under “Interactive Zoning Map”

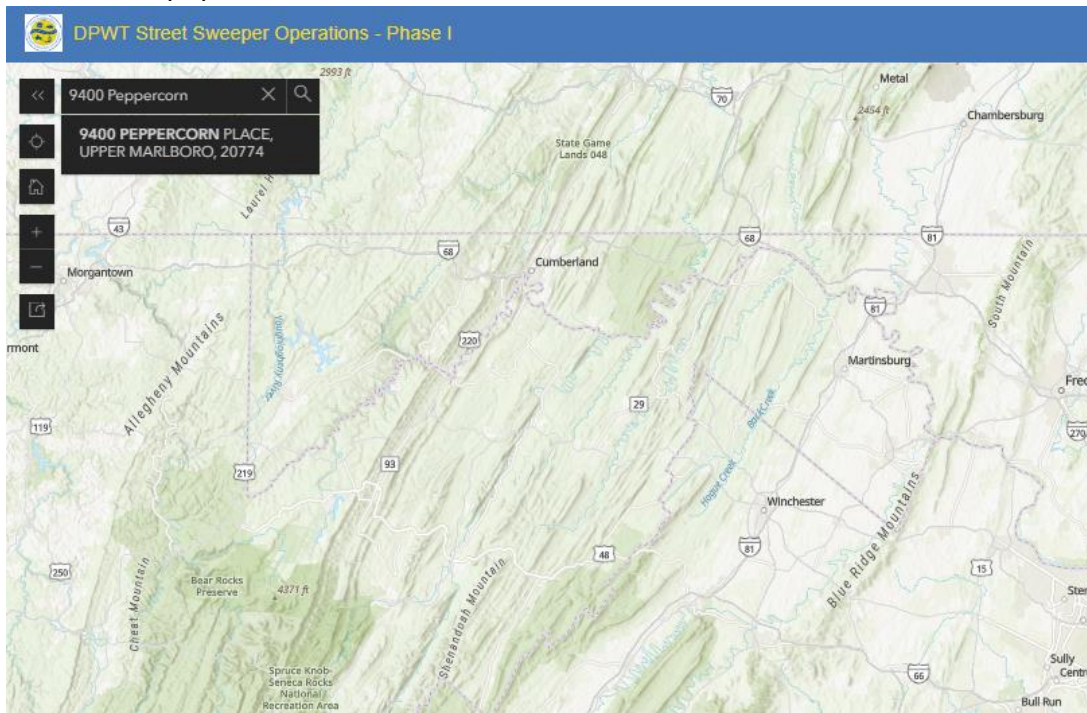


HOW-TO LOOK-UP MY STREET SWEEPING SCHEDULE ONLINE

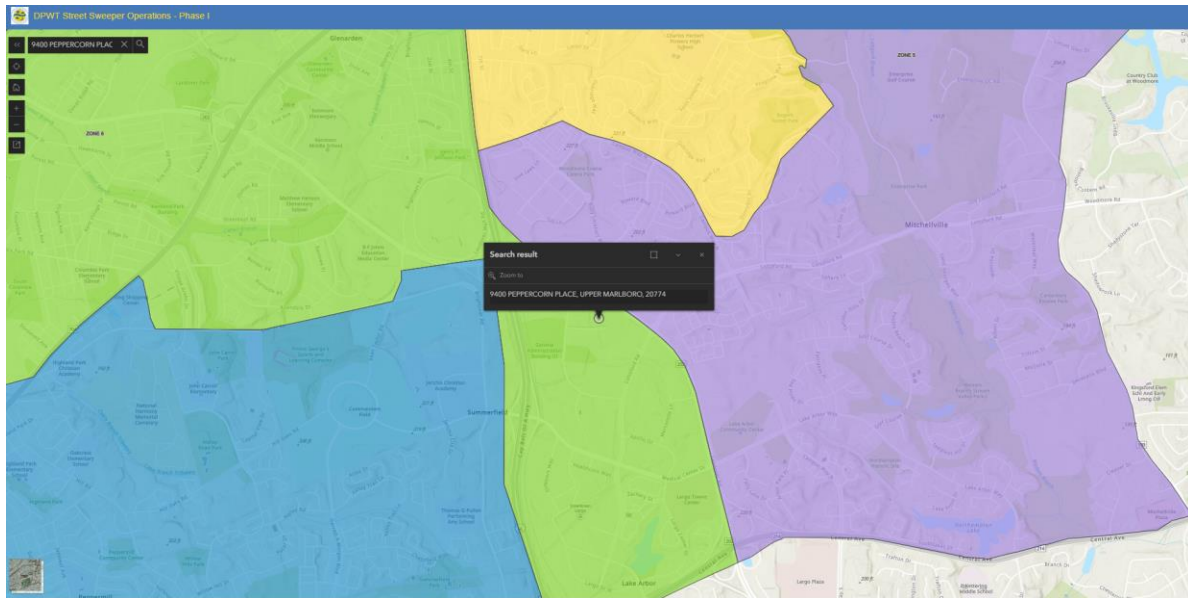
STEP 1: Visit the [Interactive Map](#) by using the step guide above OR by using the link MyPGC.US/SWEEPZONES



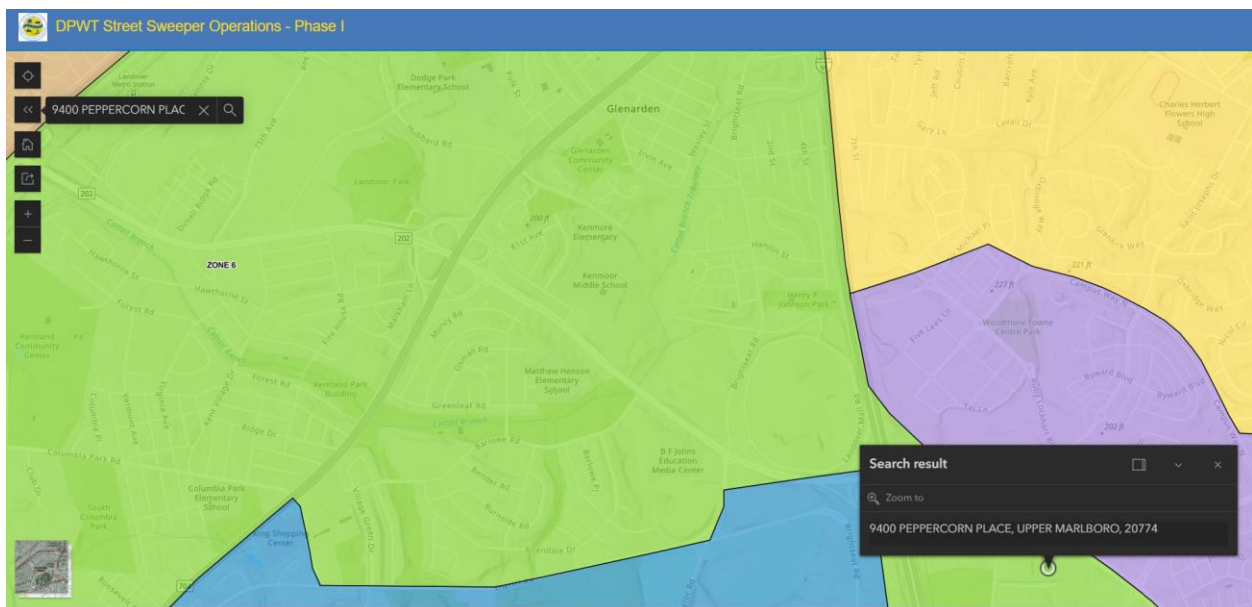
STEP 2: Type in your address in the text box that reads "Find an address, street land" and the address will populate in the text box.



STEP 3: Once you confirm the correct address, click on the address. This will bring you to a zoomed-in portion of the map and the map will now appear multi-colored. *These colors represent the different sweep zones.*



STEP 4: Click on the Street Zone mentioned in **bold**. (i.e. Click the "Zone #") Ensure that you're selecting the same zone that your location pin appears.



STEP 5: After clicking the *Zone #*, the sweeping schedule for the selected area will appear.

