

**Foundation Note**

- 1.) minimum compressive strength of concrete shall be 2500 psi.

**SAMPLE**

**WARNING AND DISCLAIMER**  
 This drawing is intended only to be illustrative of the minimum requirements of applicable County ordinances. It is not a blue print, nor a set of plans and specifications. PRINCE GEORGE'S COUNTY, MARYLAND DOES NOT WARRANT OR GUARANTEE IN ANY MANNER OF TO ANY EXTENT THE SUFFICIENCY OF THIS DRAWING. Persons to whom this drawing is distributed should not rely on it as an acceptable plan or blue print for any structure. PRINCE GEORGE'S COUNTY, MARYLAND DISCLAIMS ANY AND ALL LIABILITY FOR DAMAGES OR INJURIES, DIRECT OR CONSEQUENTIAL, ARISING OUT OF THE USE OF THIS DRAWING.

Drawing No.

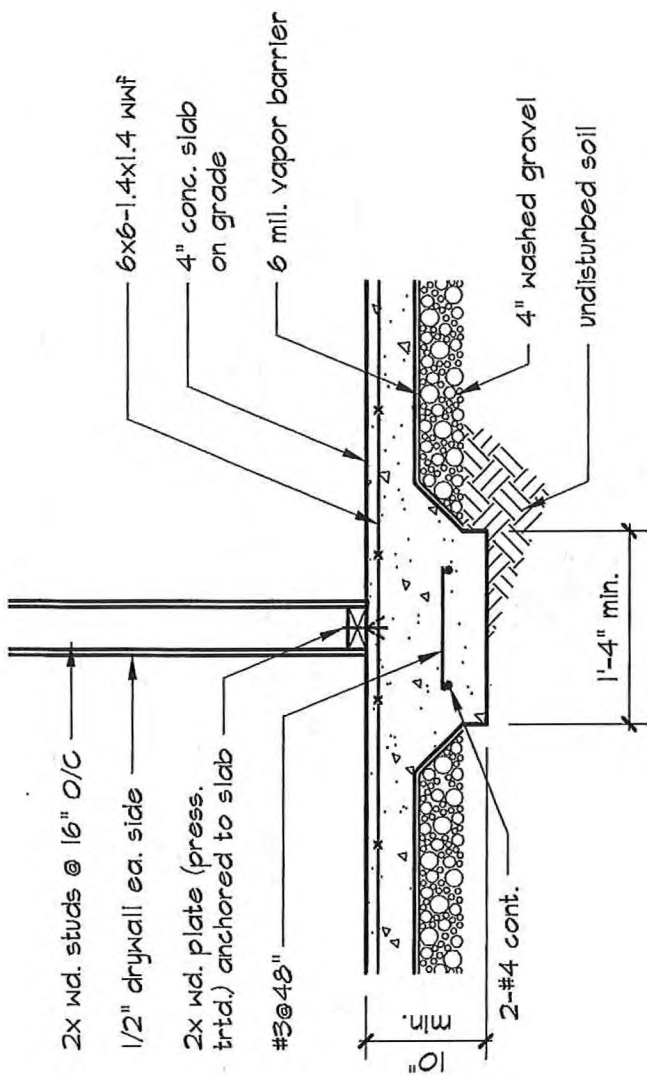
**D-103**

Sheet 1 of 2

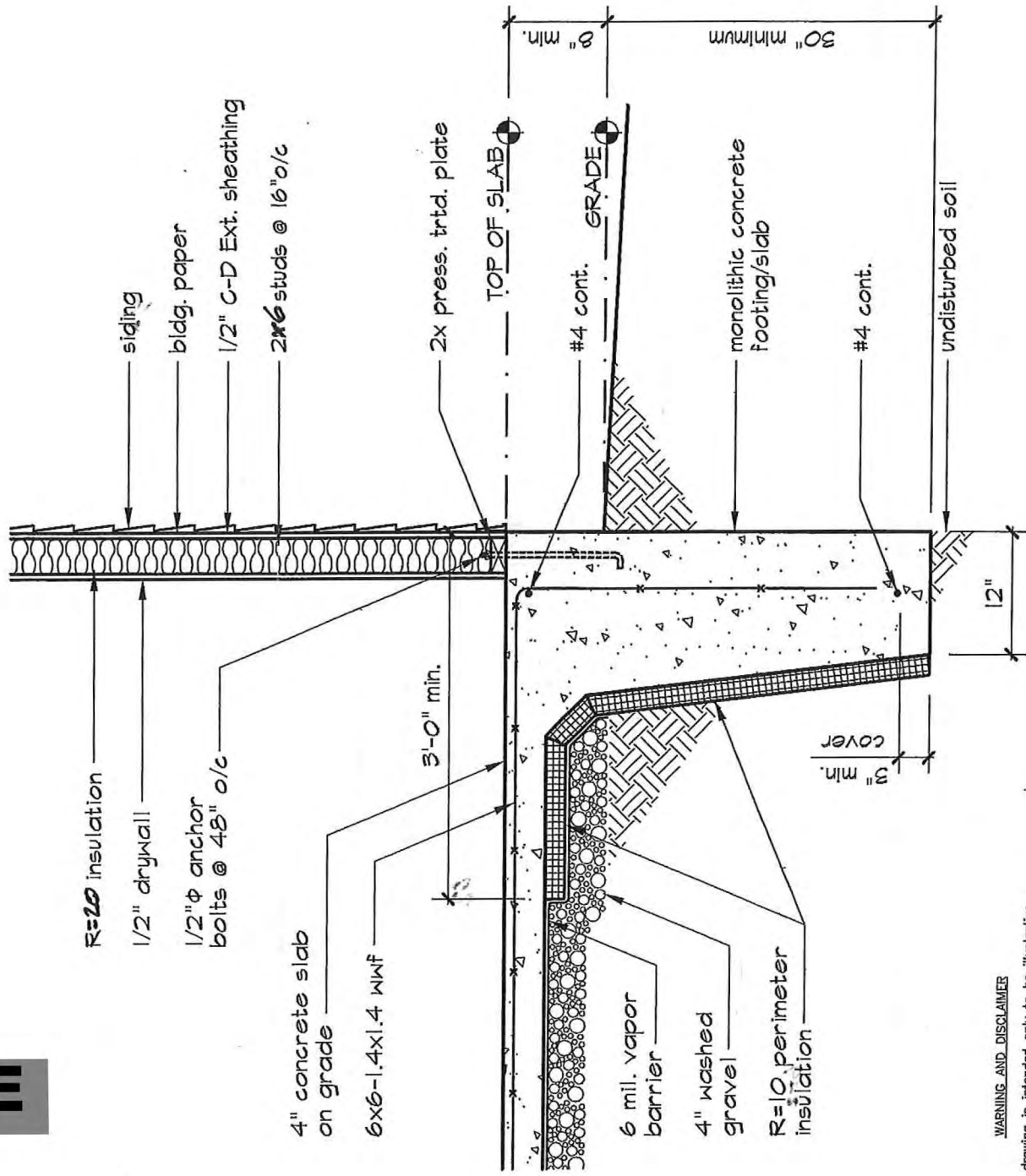
**WALL SECTION  
 SLAB ON GRADE**



**SAMPLE**



**FOOTING @ INTERIOR BEARING WALL**



**EXTERIOR PERIMETER FOOTING**

**WARNING AND DISCLAIMER**  
 This drawing is intended only to be illustrative of the minimum requirements of applicable County ordinances. It is not a blue print. PRINCE GEORGE'S COUNTY, MARYLAND DOES NOT WARRANT OR GUARANTEE IN ANY MANNER OR TO ANY EXTENT THE SUFFICIENCY OF THIS DRAWING. Persons to whom this drawing is distributed should not rely on it as an acceptable plan or blue print for any structure. PRINCE GEORGE'S COUNTY, MARYLAND DISCLAIMS ANY AND ALL LIABILITY FOR DAMAGES OR INJURIES, DIRECT OR CONSEQUENTIAL, ARISING OUT OF THE USE OF THIS DRAWING.

Drawing No.

**D-104**

Sheet 2 of 2

**MONOLITHIC FOOTING/SLAB DETAILS**

